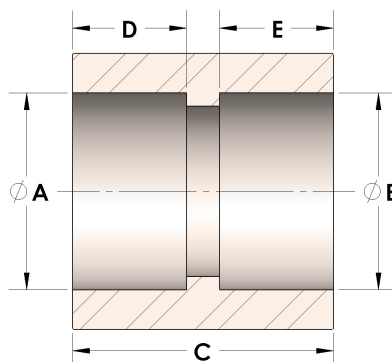


Product Category

100-1-S

Part Description

Direct Socketweld/Braze Coupling (Pipe)



## DIMENSIONS

|   |       |
|---|-------|
| A | 0.555 |
| B | 0.555 |
| C | 1.06  |
| D | 0.38  |
| E | 0.38  |

## GENERAL

|                  |   |
|------------------|---|
| Pressure Rating  | 6000 PSI                                      |
| Fitting Material | Carbon Steel, ASTM A36/311, UNS K02600/G10180 |