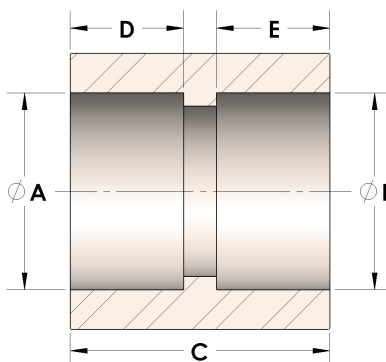


Product Category

100-2-SS316L

Part Description

Direct Socketweld/Braze Coupling (Pipe)



## DIMENSIONS

|   |       |
|---|-------|
| A | 0.690 |
| B | 0.69  |
| C | 1.06  |
| D | 0.380 |
| E | 0.38  |

## GENERAL

|                  |   |
|------------------|---|
| Pressure Rating  | 6000 PSI  |
| Fitting Material | 316/L Stainless Steel, ASTM A276, UNS S31600/03 |