

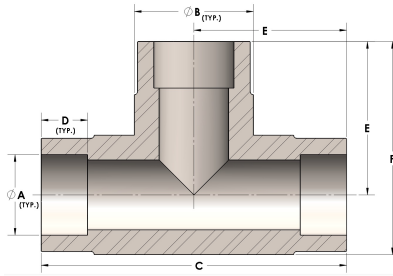


**Product Category**

H830-04-CUNI

**Part Description**

Direct Socketweld/Braze Tee (Tube)



**DIMENSIONS**

A	0.250
B	0.63
C	1.63
D	0.190
E	0.81
F	1.13

**GENERAL**

Pressure Rating	6000 PSI
Fitting Material	Copper Nickel 70/30, MIL-C--15726F, UNS C71500