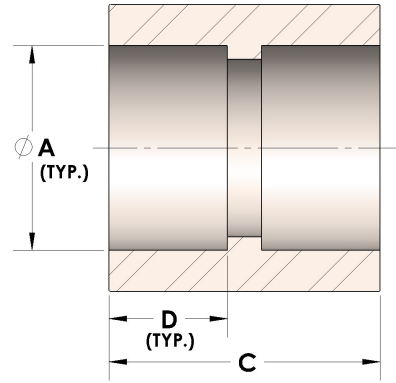


**Product Category**

H847-04-SS316L

**Part Description**

Direct Socketweld/Braze Coupling (Tube)



**DIMENSIONS**

<b>A</b>	0.25
<b>C</b>	0.44

**GENERAL**

<b>Pressure Rating</b>	6000 PSI
<b>Fitting Material</b>	316/L Stainless Steel, ASTM A276, UNS S31600/03