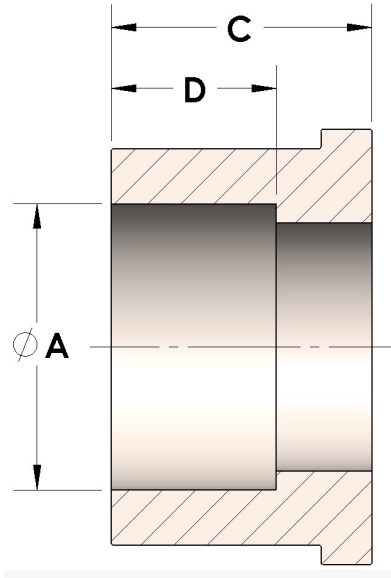


Product Category

Part Description

H849R-04-SS316L

Socketweld/braze Tube Tailpiece



DIMENSIONS

| | |
|---|-------|
| A | 0.250 |
| C | 0.38 |
| D | 0.190 |

GENERAL

| | |
|--------------------|---|
| Pressure Rating | 6000 PSI |
| Tailpiece Material | 316/L Stainless Steel, ASTM A276, UNS S31600/03 |